

---

## Colonization of arbuscular mycorrhizal fungi in moderately degraded sub-tropical forest stands of Meghalaya, Northeast India

---

Songachan, L.S., Lyngdoh, I. and Highland, K.\*

Microbial Ecology Laboratory, Department of Botany, North Eastern Hill University, Shillong-793 022, India

Songachan, L.S., Lyngdoh, I. and Highland, K. (2011) Colonization of arbuscular mycorrhizal fungi in moderately degraded sub-tropical forest stands of Meghalaya, Northeast India. *Journal of Agricultural Technology* 7(6): 1673-1684.

The roots of eight plants species in six families from moderately degraded sub-tropical forest stands of Meghalaya, Northeast India were examined for arbuscular mycorrhizal fungi (AMF). All the surveyed plant species had AMF colonization in the form of arbuscules, vesicles and hyphae. The result of the investigation reveals that the percentage of AMF colonization varied in different plant species. The intensity of colonization ranges from 38.98% to 87.77%, with the lowest in *Cinnamomum tamala* and highest in *Ophiopogon intermedius*. Analysis of the rhizosphere soils showed that mycorrhizal spores were present in all locations from where the plant roots were collected. The mean spore density per 25g of soil ranged between 38.67 and 89. Correlation analyses demonstrated that total AMF colonization shows a positive correlation ( $p < 0.05$ ) with spore density and also with hyphae and vesicles. The hyphal colonization had a negative correlation ( $p < 0.05$ ) with arbuscules and positive correlation ( $p < 0.05$ ) with vesicles. The present study indicated that AMF was formed in the roots of various plants in moderately degraded sub-tropical forest of Northeast India with varied rate of colonization and spore density.

**Key words:** Arbuscular mycorrhizal fungi, colonization, spore density, plant species.

### Introduction

AMF are a major component of rhizosphere soils, forming mutualistic symbiotic association (Closa and Goicoeche, 2011) with 80% of all terrestrial plant (Smith and Read, 2008). AMF benefit from this association by obtaining carbon compounds which are necessary for their growth and in return, they have diverse, beneficial impacts on plants and soils (Brundrett *et al.*, 1999; Li *et al.*, 2006). Mycorrhiza is of basic importance for both individual plants and for entire plant community as it influences the plant diversity, productivity, community structure, ecosystem processes and improves the growth of young

---

\* Corresponding author: Highland, K; e-mail address: [hkayang@yahoo.com](mailto:hkayang@yahoo.com)

seedlings (van der Heijden *et al.*, 1998). Mycorrhizal symbioses play a key role in nutrient cycling in the ecosystem and also protect plants against environmental stress (Barea and Jeffries, 1995).

Distribution of AMF in different plant species of a particular ecological zone is important in order to evaluate the natural status of AM fungi in that region. However, selection of the most specific and appropriate plant-fungus association for each specific environmental and ecological situation is one of the main challenges in current research on AMF (Khanam *et al.*, 2006). AMF shows different responses on root colonization intensity and spore population depending on the host species or environmental factors (Likar *et al.*, 2008; Li *et al.*, 2005; Muthukumar and Udaiyan, 2002).

In many parts of the world, natural vegetation has been disturbed as a consequence of management practices. Moreover, an increasing demand for forest products may endanger many important plant species and their habitats (Fuchs and Haselwandter, 2008). Considerable amount of research has done, which aims at understanding the effects of human-induced environmental change (Oechel *et al.*, 2000). Unfortunately, much of the work focuses on the aboveground rather than belowground level despite these two subsystems being closely interlinked (Wardle *et al.*, 2004). The restoration and re-establishment of degraded ecosystems should include not only the aboveground systems but also the below-ground microorganisms which are associated functionally with plants (Li *et al.*, 2007a). It has been suggested that the success of any ecosystem reforestation efforts are likely to depend on the establishment of mycorrhizas, and AM should receive special attention in restoration of degraded ecosystem (Wubet *et al.*, 2003).

Owing to the multiple beneficial effects on plant performance and soil health, AMF are crucial for the restoration and re-establishment of the vegetation in degraded ecosystems (Cuenca *et al.*, 1998; Dhillion and Gardsjord, 2004). Therefore, mycorrhizal technology, which is cost effective and simple, can be use to improve forest products and environmental quality in different production systems. Although, many different types of plant species are found in Meghalaya, Northeast India, very little work has been done on AMF association with different plants species from this region. Moreover, most of the studies with AMF are confined to agricultural soils (Grayston *et al.*, 2001) and in forest ecosystem such studies are rather limited. Due to the importance of AMF for vegetation re-establishment in degraded ecosystems, we investigate the AM colonization and its fungal spore density from eight plant species (Table. 1) belonging to six families growing in a moderately degraded tropical forest stands of Meghalaya.

**Table 1.** The plant species studied for AMF colonization

<b>Plant spp</b>	<b>Family</b>	<b>Growth form</b>
<i>Disporum cantoniense</i>	Colchicaceae	Herb
<i>Hedera helix</i>	Araliaceae	Herb
<i>Ophiopogon intermedius</i>	Ruscaceae	Herb
<i>Sarcandra glabra</i>	Chloranthaceae	Shrub
<i>Smilax rotundifolia</i>	Smilacaceae	Herb
<i>Cinnamomum tamala</i>	Lauraceae	Shrub
<i>Neolitsea sericea</i>	Lauraceae	Tree
<i>Persea odoratissima</i>	Lauraceae	Tree

## Materials and methods

### *Study site and field sampling*

The roots and rhizosphere soil of eight different plant species were collected from Upper Shillong, Meghalaya, North East India, located at 25°33'38'' N and 91°51'2''E, with an elevation of 1900msl. Three subsamples each of roots and rhizosphere soil were collected randomly, which were then, merge into one composite sample. The samples were kept in a sterilized plastic bag and transported in the laboratory for analysis.

### *Root treatment and AMF colonization assessment*

Roots were washed thoroughly with tap water and cut into approximately 1 cm long segments. The roots were then cleared in 10% (w/v) KOH by heating at 90°C for 1 to 2 hours, depending on the degree of lignifications of the roots. It is then washed and stained stamp pad ink (Das and Kayang, 2008). AMF colonization was determined by the magnified intersection method of McGonigle *et al.* (1990) and expressed it in percentage.

### *AMF spore extraction and density*

AMF spore extraction was done by following the method of INVAM (www.invam.caf.wvu.edu). Spore density was expressed as number of AM fungal spores per 25g soil sample.

### *Analysis of soil physicochemical properties*

Soil moisture was determined by drying 10 g fresh soil at 105°C for 24 h in a hot-air oven. Soil pH was determined using a digital pH meter. Available phosphorus and organic carbon were determined by following the methods of

Allen *et al.* (1974) and Anderson and Ingram (1993) respectively. Soil texture was determined using the bouyoucos method of Allen *et al.* (1974).

### Statistical analysis

Standard errors of means were calculated. Relationship between mycorrhizal structural colonization and soil physico-chemical properties were computed using Pearson's correlation coefficient.

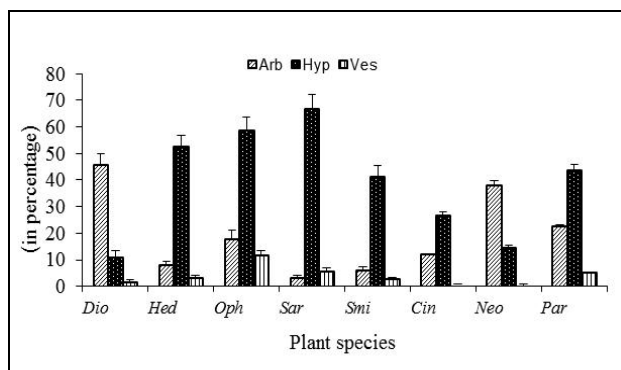
### Results

The soil physico-chemical properties are presented in Table 2. The soil pH was acidic for all plant species (4.7 to 5.1). There was a large difference in soil moisture content, organic carbon and available phosphorus among plant species. Texture of the soil was sandy loam. All of the surveyed plants formed mycorrhizal association. Arbuscules, vesicles and hyphae (Fig.1 and Fig.2) were observed, and occasionally intra-radical spores were also observed. AMF colonization and spore density of 8 plant species are given in Fig.3a and 3b. Vesicular colonization is comparatively lesser than arbuscular and hyphal colonization. Wide variation was observed in the percentage of AMF colonization among plant species. The percentage of AMF colonization was 57.87 in *Disporum cantoniense*, 63.56 in *Hedera helix*, 87.77 in *Ophiopogon intermedius*, 75.29 in *Sarcandra glabra*, 49.37 in *Smilax rotundifolia*, 38.98 in *Cinnamomum tamala*, 52.96 in *Neolitsea sericea* and 71.02 in *Persea odoratissima*. It shows that colonization was lowest in *Cinnamomum tamala* and highest in *Ophiopogon intermedius*.

**Table 2.** Selected soil physico-chemical characteristics of eight plant species

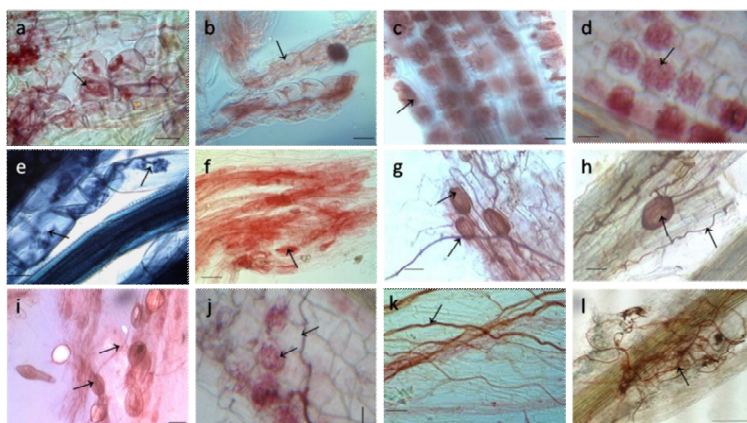
Plant species	pH	MC (%)	OC (%)	AP( $\mu$ g)	Clay%	Sand%	Silt%
<i>Disporum cantoniense</i>	4.74 $\pm$ 0.01	23.42 $\pm$ 0.14	2.07 $\pm$ 0.09	2.13 $\pm$ 0.13	2.78	95.33	1.89
<i>Hedera helix</i>	4.90 $\pm$ 0.07	15.88 $\pm$ 0.05	1.95 $\pm$ 0.07	1.70 $\pm$ 0.30	2.85	95.22	1.93
<i>Ophiopogon intermedius</i>	4.86 $\pm$ 0.02	21.88 $\pm$ 0.15	2.14 $\pm$ 0.06	2.40 $\pm$ 0.40	4.69	93.42	1.89
<i>Sarcandra glabra</i>	4.65 $\pm$ 0.01	26.30 $\pm$ 0.14	2.50 $\pm$ 0.01	2.73 $\pm$ 0.07	4.65	93.47	1.88
<i>Smilax rotundifolia</i>	4.88 $\pm$ 0.03	14.07 $\pm$ 0.09	1.19 $\pm$ 0.19	2.87 $\pm$ 0.13	2.88	95.17	1.95
<i>Cinnamomum tamala</i>	5.16 $\pm$ 0.02	42.40 $\pm$ 0.10	2.74 $\pm$ 0.05	2.31 $\pm$ 0.16	4.90	93.67	1.43
<i>Neolitsea sericea</i>	4.87 $\pm$ 0.01	39.70 $\pm$ 0.06	2.45 $\pm$ 0.21	2.39 $\pm$ 0.09	3.36	94.54	2.10
<i>Persea odoratissima</i>	5.03 $\pm$ 0.01	39.40 $\pm$ 0.06	2.61 $\pm$ 0.10	5.04 $\pm$ 0.08	3.66	94.11	2.23

Note: MC = Soil moisture content, OC = Organic carbon, AP = Available phosphorus and  $\pm$  indicates standard error.



**Fig 1.** Mycorrhizal colonization in eight different plant species.

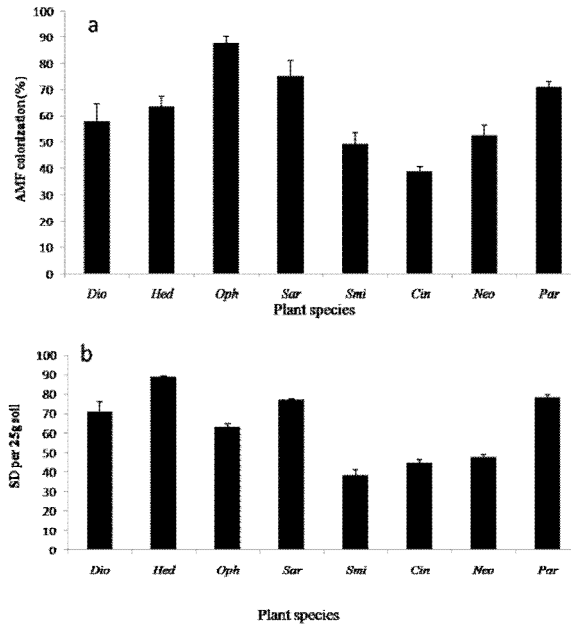
Note: Dio = *Disporum cantoniense*, Hed = *Hedera helix*, Oph = *Ophiopogon intermedius*, Sar = *Sarcandra glabra*, Smi = *Smilax rotundifolia*, Cin = *Cinnamomum tamala*, Neo = *Neolitsea sericea* and Par = *Persea odoratissima*



**Fig 2.** Mycorrhizal colonization in the roots of eight different plant species.

Note: (a-e) Arbuscules in *Disporum cantoniense*, *Hedera helix*, *Cinnamomum tamala*, *Neolitsea sericea* and *Sarcandra glabra*. Scale bar = 65, 60, 60, 40 and 80  $\mu$ m, respectively. (f) Vesicles in *Hedera helix*. Scale bar = 170  $\mu$ m. (g-j) Vesicles and hyphae in *Smilax rotundifolia*, *Persea odoratissima*, *Ophiopogon intermedius* and *Neolitsea sericea*. Scale bar = 40, 40, 60 and 40  $\mu$ m, respectively. (k & l) Hyphae in *Hedera helix* and *Disporum cantoniense*. Scale bar = 40 and 170  $\mu$ m.

Similar to AMF colonization, spore density also varied greatly among plant species. AMF spore density was 71 in *Disporum cantoniense*, 89 in *Hedera helix*, 63 in *Ophiopogon intermedius*, 77.33 *Sarcandra glabra*, 38.67 in *Smilax rotundifolia*, 45 in *Cinnamomum tamala*, 48 in *Neolitsea sericea* and 78.33 in *Persea odoratissima*. Correlation between mycorrhizal structural colonization, AMF colonization, spore density and soil physico-chemical properties are presented in Table 3. Correlation analysis demonstrated that total AMF colonization shows a positive correlation ( $p < 0.05$ ) with spore density and also with hyphae and vesicles. The hyphal colonization had a negative correlation ( $p < 0.05$ ) with arbuscules and positive correlation ( $p < 0.05$ ) with vesicles. Total AMF colonization shows a negative correlation with soil pH.



**Fig.3.** (a) Percentage of AMF colonization in the roots of eight plant species and (b) AMF spore density (SD) of eight plant species. Note: *Dio* = *Disporum cantoniense*, *Hed* = *Hedera helix*, *Oph* = *Ophiopogon intermedius*, *Sar* = *Sarcandra glabra*, *Smi* = *Smilax rotundifolia*, *Cin* = *Cinnamomum tamala*, *Neo* = *Neoliusea sericea* and *Par* = *Persea odoratissima*

**Table 3.** Pearson's correlation coefficient between mycorrhizal structural colonization, spore density and selected physico-chemical properties of soil

All New	Arb	Hyp	Ves	AMF	SD	pH	MC	OC	AP	Clay	Sand	Silt
Arb	1.00	-0.79*	-0.27	-0.11	0.05	-0.11	0.32	0.19	-0.01	-0.37	0.32	0.29
Hyp		1.00	0.72*	0.69*	0.38	-0.23	-0.41	-0.08	0.15	0.40	-0.47*	0.08
Ves			1.00	0.90*	0.31	-0.22	-0.28	-0.01	0.17	0.46*	-0.56*	0.18
AMF				1.00	0.62*	-0.46*	-0.28	0.08	0.22	0.26	-0.42	0.43
SD					1.00	-0.37	-0.23	0.21	0.02	-0.12	0.05	0.30
pH						1.00	0.53*	0.28	0.26	0.21	-0.14	-0.32
MC							1.00	0.85*	0.40	0.44	-0.47*	-0.09
OC								1.00	0.24	0.62*	-0.64*	-0.17
AP									1.00	0.08	-0.24	0.54*
Clay										1.00	-0.97*	-0.50*
Sand											1.00	0.28
silt												1.00

Note: \*Correlation is significant at  $p < 0.05$ . Arb = Arbuscules, Hyp = Hyphae, Ves = Vesicles, AMF = Total AMF, SD = Spore density, MC = Moisture content, OC = Organic carbon, AP = Available phosphorous.

## Discussion

The variation in AMF colonization associated with different host plant species may be generated by a variety of potential mechanisms, including

biological characteristics of rhizosphere under host species, mycorrhizal dependency, host plant-mediated alteration of the soil microenvironment (Wu *et al.* (2009), specific habitat conditions (Štajerová *et al.*, 2009), AMF diversity and species composition (Gange *et al.*, 1990), or seasonal and ontogenetic variations (Jakobsen *et al.*, 2002) and nutrient demands of the host (Muthukumar and Udaiyan, 2002). Our studies suggested that the incidence of AMF colonization was moderate to high in moderately degraded sub-tropical forest. These results in contrast with the study of Gehring and Connell (2006) who found low occurrence of AMF in tropical forest but are consistent with the results of several studies that observed high occurrence of AMF in such ecosystem (Allen *et al.*, 1998; Onguene and Kuyper, 2002).

The mean AMF spore density (25g soil)<sup>-1</sup> ranges from 38.67 to 89 which was lower than that of other undisturbed environments. Gehring *et al.* (2002) reported 54 spores per g soil. Whereas, Johnson and Wedin (1997) reported 15,531 AMF spores per 25 g soil in tropical ecosystem. However, the threatened semiarid Mediterranean ecosystem is indicated. Ferrol *et al.* (2004) reported a relatively low AM fungal spores (2 to 55 per 100 g of soil). Enkhtuya *et al.* (2000) reported that the spore density in undisturbed land was significantly higher than that in cropped land, which further supported the view that disturbances reduce AMF root colonization and spore density (Helgason *et al.*, 1998; Oehl *et al.*, 2003).

Large difference in spore density might be influenced by an array of factors which come from environment, host and fungus, and spore density tend to decrease during root growth but increase during root inactivity or senescence (Muthukumar *et al.* 2003a). Moreover, fluctuations in the number of AMF fungal spores would be expected to occur if they were lost during periods of mycorrhizal formation, or as a result of predation by soil organisms (Brundrett, 1991). Availability and activity of AMF spores can be affected by vegetation removal (Boddington and Dodd, 2000) leading to a significant decrease in spore density and colonization, as well as a loss in infectivity (Jasper *et al.*, 1989. According to Troeh and Loynachan (2003) stated that AMF survival in soil may be affected by the presence or absence of host plants and by the plant species being grown.

In our present study, we observed that total AMF colonization shows a positive correlation with spore density, which is in accordance with the study of Sigüenza *et al.* (1996). However, some researchers suggested that no significant correlation between AM colonization and spore density were observed (Camargo-Raicalde and Dhillion, 2003; Li *et al.*, 2007b) whereas, Fontenla *et al.*, (1998) found a negative relationship between AMF colonization and spore density. Generally, AM colonization is influenced by spore availability

(Muthukumar *et al.*, 2003b). Zhao *et al.* (2001) suggested that the uneven spatial distribution of AMF spores and the complex structure of the underground root component should be considered as major factors affecting AMF spore density which could contribute to variable rates of AMF colonization among plants (Lovelock and Miller, 2002). Gai *et al.* (2006) reported that mycorrhizal incidence among wild herbaceous is consistently high, with over 90% of the species examined exhibiting AMF colonization. Correlation analysis demonstrated that total colonization was significantly and positively correlated with hyphal and vesicular colonization. Wu *et al.* (2009) also reported a similar finding and suggested that it is due to the hyphae and vesicles, which are the primary structures of AMF, exist for months or years. However, arbuscules begin to form approximately two days after root penetration and begin to collapse after a few days (Smith, 1995).

Soil phosphorus does not show correlation with total colonization which is in agreement with the study by Ruotsalainen *et al.* (2002). The low phosphorus content of the soil could be ecologically significant for AMF in phosphorus uptake. Many studies have reported that the colonization potential was higher in soils where the P concentration was lower (Harley and Smith, 1983; Galvez *et al.*, 2001) and vice versa (Nogueira and Cardoso, 2006). Sylvia *et al.* (1993) observed a decrease in all AMF parameters by different AMF from a wide array of habitats, when P exceeded 10 mg kg<sup>-1</sup> soil. Total AMF colonization shows a negative correlation ( $p < 0.05$ ) with soil pH. Wang, (1993) suggested that pH is an important factor influencing AM fungal species composition. AMF respond the most at pH range of 5.6 to 7.1 (Friberg, 2001). Apparently, soil pH and P do influence certain fungal species and their ability to colonize roots. (Johnson *et al.*, 1991) observed that overall AMF production in the form of spore propagules may increase with soil pH.

AMF plays an important role in plant survival and community stability of vegetation in natural ecosystems (Hartnett and Wilson, 2002; Moraes *et al.*, 2004). AM symbiosis is the most effective among the biotic factors that could favor rapid plant re-establishment and fasten plant growth (Duponnois *et al.*, 2001). The present study indicated that AMF was formed in the roots of various plants in moderately degraded forest, which demonstrated that these associations might be one of the effective methods of acclimatizing plants to the degraded environments.



## Acknowledgement

The authors are grateful to the Head, Department of Botany, for providing laboratory facilities. The first author is also grateful to the Rajiv Gandhi National Fellowship, New Delhi, for financial support in the form of research fellowship.

## Reference

- Allen, E.B., Rincon, E., Allen, M.F., Perez-Jimenez, A. and Huante, P. (1998). Disturbance and seasonal dynamics of mycorrhizae in tropical deciduous forest in Mexico. *Biotropica* 13: 1701–1717.
- Allen, S.E., Grinshaw, H.M., Parkinson, J.A. and Quaramby, C. (1974). Chemical analysis of ecological materials. Blackwell Scientific Publications, Oxford.
- Anderson, J.M. and Ingram, J.S.I. (1993). Tropical Soil Biology and Fertility. A handbook of methods. CAB International, Oxford.
- Barea, J.M. and Jeffries, P. (1995). Arbuscular mycorrhizas in sustainable soil plant systems. In: A. Varma and B. Hock (Editors), *Mycorrhiza Structure, Function, Molecular Biology and Biotechnology*. Springer-Verlag, Heidelberg, pp. 521-560.
- Boddington, C.L. and Dodd, J.C. (2000). The effect of agricultural practices on the development of indigenous arbuscular mycorrhizal fungi. II. Studies in experimental microcosms. *Plant Soil* 218: 145–157.
- Brundrett, M. (1991). Mycorrhizas in natural ecosystems. *Advances in Ecological Research* 21: 171–313.
- Brundrett, M.C., Abbott, L.K. and Jasper, D.A. (1999). Glomalean mycorrhizal fungi from tropical Australia I. Comparison of the effectiveness and specificity of different isolation rocedures. *Mycorrhiza* 8: 305–314.
- Camargo-Ricalde, S.L. and Dhillion, S.S. (2003). Endemic *Mimosa* species can serve as mycorrhizal “resource islands” within semiarid communities of the Tehuacán-Cuicatlán Valley, Mexico. *Mycorrhiza* 13: 129–136.
- Closa, I. and Goicoeche, N. (2011). Infectivity of arbuscular mycorrhizal fungi in naturally regenerating, unmanaged and clear-cut beech forests. *Pedosphere* 21(1): 65–74.
- Cuenca, G., de Andrade, Z. and Escalante, G. (1998). Arbuscular mycorrhizae in the rehabilitation of fragile degraded tropical lands. *Biology and Fertility of Soils* 26: 107–111.
- Das, P. and Kayang, H. (2008). Stamp pad ink, an effective stain for observing arbuscular mycorrhizal structure in roots. *World Journal of Agricultural Sciences* 4: 58–60.
- Dhillion, S.S. and Gardsjord, T.L. (2004). Arbuscular mycorrhizas influence plant diversity, productivity, and nutrients in boreal grasslands. *Canadian Journal of Botany* 82: 104–114.
- Duponnois, R., Plenchette, C., Thioulouse, J. and Cadet, P. (2001). The mycorrhizal soil infectivity and arbuscular mycorrhizal fungal spore communities in soils of different and aged fallows in Senegal. *Applied Soil Ecology* 17: 239–251.
- Enkhtuya, B., Rydlová, J. and Vosátka, M. (2000). Effectiveness of indigenous and non-indigenous isolates of arbuscular mycorrhizal fungi in soils from degraded ecosystems and man-made habitats. *Applied Soil Ecology* 14: 201–211.
- Ferrol, N., Calvente, R., Cano, C., Barea, J.M. and Aguilar, C.A. (2004). Analysing arbuscular mycorrhizal fungal diversity in shrub-associated resource islands from a desertification-threatened semiarid Mediterranean ecosystem. *Applied Soil Ecology* 25: 123–133.
- Fontenla, S., Godoy, R., Rosso, P. and Havrylenko, M. (1998). Root associations in *Austrocedrus* forests and seasonal dynamics of arbuscular mycorrhizas. *Mycorrhiza* 8: 29–33.

- Friberg, S. (2001). Distribution and diversity of arbuscular mycorrhizal fungi in traditional agriculture on the Niger inland delta, Mali, West Africa. *CBM:s Skriftserie* 3: 53-80.
- Fuchs, B. and Haselwandter, K. (2008). Arbuscular mycorrhiza of endangered plant species: potential impacts on restoration strategies. In: Varma A (ed) *Mycorrhiza: state of the art, genetics and molecular biology, eco-function, biotechnology, eco-physiology, structure and systematics*. Springer, Heidelberg, pp 565–579.
- Gai, J.P., Christie, P., Feng, G. and Li, X.L. (2006). Twenty years of research on community composition and species distribution of arbuscular mycorrhizal fungi in China: a review *Mycorrhiza* 16: 229–239.
- Galvez, L., Douds, D.D. Jr, Drinkwater, L.E. and Wagoner, P. (2001). Effect of tillage and farming system upon VAM fungus populations and mycorrhizas and nutrient uptake of maize. *Plant Soil* 228: 299–308.
- Gange, A.C., Brown, V.K. and Farmer, L.M. (1990). A test of mycorrhizal benefit in an early successional plant community. *New Phytologist* 115: 85–91.
- Gehring, C.A., Wolf, J.E. and Theimer, T.C. (2002). Terrestrial vertebrates promote arbuscular mycorrhizal fungal diversity and inoculum potential in a rain forest soil. *Ecology Letter* 5: 540–548.
- Gehring, C.A. and Connell, J.H. (2006). Arbuscular mycorrhizal fungi in the tree seedlings of two Australian rain forests: occurrence, colonization, and relationships with plant performance. *Mycorrhiza* 16: 89–98.
- Grayston, S.J., Griffith, G.S., Mawdsley, J.L., Campbell, C.D. and Bardgett, R.D. (2001). Accounting for variability in soil microbial communities of temperate upland grassland ecosystems. *Soil Biology and Biochemistry* 33: 533 – 551.
- Harley, J.L. and Smith, S.E. (1983). *Mycorrhizal symbiosis*. Academic, London.
- Hartnett, D.C. and Wilson, G.W.T. (2002). The role of mycorrhizas in plant community structure and dynamics: lessons from grasslands. *Plant and Soil* 244: 319–331.
- Helgason, T., Daniell, T.J., Husband, R., Fitter, A.H. and Young, J.P.W. (1998). Ploughing up the wood-wide web? *Nature* 394: 431–431.
- Jakobsen I., Smith S.E. and Smith F.A. (2002). Function and diversity of arbuscular mycorrhizae in carbon and mineral nutrition. In: van der Heijden M. G. A. & Sanders I. R. (eds), *Mycorrhizal ecology*, p. 75–88, Springer, Berlin.
- Jasper, D.A., Abbot, L.K. and Robson, A.D. (1989). *Acacia's* respond to additions of phosphorus and to inoculation with VA-mycorrhizal fungi in soils stockpiled during mineral sand mining. *Plant and Soil* 115: 99–108.
- Johnson, N.C. and Wedin, D.A. (1997): Soil carbon, nutrients, and mycorrhizae during conversion of dry tropical forest to grassland. *Ecological Applications* 7: 171–182.
- Johnson, N.C., Zak, D.R., Tilman, D. and Pfleger, F.L. (1991). Dynamics of vesicular-arbuscular mycorrhizal fungi during old field succession. *Oecologia* 86: 349-358.
- Khanam, D., Mridha, M.A.U. and Solaiman, A.R.M. (2006). Comparative study of arbuscular mycorrhizal association with different agricultural crops among four aezs of Bangladesh *Journal of Agricultural Research* 44(2).
- Li, L.F., Zhang, Y. and Zhao, Z.W. (2007b). Arbuscular mycorrhizal colonization and spore density across different land-use types in a hot and arid ecosystem, Southwest China. *Journal of Plant Nutrition and Soil Science* 170: 419–425.
- Li, H., Smith, S.E., Holloway, R.E., Zhu, Y. and Smith, F.A. (2006). Arbuscular mycorrhizal fungi contribute to phosphorous uptake by wheat grown in a phosphorous-fixing soil even in the absence of positive growth responses. *New Phytologist* 172: 536–543.

- Li, L.F., Tao, L. and Zhao, Z.W. (2007a). Differences of arbuscular mycorrhizal fungal diversity and community between a cultivated land, an old field, and a never-cultivated field in a hot and arid ecosystem of southwest China. *Mycorrhiza* 17: 655–665.
- Li, L.F., Yang, A.N. and Zhao, Z.W. (2005). Seasonality of arbuscular mycorrhizal symbiosis and dark septate endophytes in a grassland site in southwest China. *FEMS Microbiology Ecology* 54: 367–373.
- Likar, M., Bukovnik, U., Kreft, I., Chrungoo, N.K. and Regvar, M. (2008). Mycorrhizal status and diversity of fungal endophytes in roots of common buckwheat (*Fagopyrum esculentum*) and tartary buckwheat (*Fagopyrum tataricum*). *Mycorrhiza* 18:309–315.
- Lovelock, C.E. and Miller, R. (2002) Heterogeneity in inoculum potential and effectiveness of arbuscular mycorrhizal fungi. *Ecology* 83: 823–832.
- McGonigle, T.P., Miller, M.H, Evans, D.G., Fairchild, G.L. and Swan, J.A. (1990). A new method which gives an objective measure of colonization of roots by vesicular–arbuscular mycorrhizal fungi. *New Phytologist* 115: 495–501.
- Moraes, R.M., Andrade, D.Z., Bedir, E., Dayan, F.E., Lata, H. and Khan, I. (2004). Arbuscular mycorrhiza improves acclimatization and increases lignan content of micropropagated mayapple (*Podophyllum peltatum* L.). *Plant Science* 166: 23–29.
- Muthukumar, T., Sha, L.Q., Yang, X.D., Cao, M., Tang, J.W. and Zheng, Z. (2003a). Mycorrhiza of plants in different vegetation types in tropical ecosystems of Xishuangbanna, southwest China. *Mycorrhiza* 13: 289–297.
- Muthukumar, T., Sha, L.Q., Yang, X.D., Cao, M., Tang, J.W. and Zheng, Z. (2003b). Distribution of roots and arbuscular mycorrhizal associations in tropical forest types of Xishuangbanna, southwest China. *Applied Soil Ecology* 22: 241–253.
- Muthukumar, T. and Udaiyan, K. (2002). Seasonality of vesicular arbuscular mycorrhizae in sedges in a semi-arid tropical grassland. *Acta Oecologica* 23:337–347.
- Nogueira, M.A. and Cardoso, E.J.B.N. (2006). Plant growth and phosphorus uptake in mycorrhizal rangpur lime seedlings under different levels of phosphorus. *Pesquisa Agropecuária Brasileira Brasília* 41: 93-99.
- Oechel, W.C., Vourtilis, G.L. and Hastings, S.J. (2000). Acclimation of ecosystem CO<sub>2</sub> exchange in the Alaskan Arctic in response to decadal climate warming. *Nature* 406: 978-981.
- Oehl, F., Sieverding, E., Ineichen, K., Mäder, P. and Boller, T. and Wiemken, A. (2003). Impact of land use intensity on the species diversity of arbuscular mycorrhizal fungi in agroecosystems of central Europe. *Applied and Environmental Microbiology* 69: 2816–2824.
- Onguene, N.A. and Kuyper, T.W. (2002). Importance of the ectomycorrhizal network for seedling survival and ectomycorrhiza formation in rain forests of south Cameroon. *Mycorrhiza* 12: 13–17.
- Ruotsalainen, A.L., Väre, H. and Vestberg, M. (2002). Seasonality of root fungal colonization in low-alpine herbs. *Mycorrhiza* 12: 29–36.
- Sigüenza, C., Espejel, I. and Allen, E.B. (1996). Seasonality of mycorrhizae in coastal sand dunes of Baja California. *Mycorrhiza* 6: 151–157.
- Smith, S.E. (1995). Discoveries, discussions and directions in research on mycorrhizae. In: Varma A, Hock B, eds. *Mycorrhiza, Structure, Function, Molecular Biology and Biotechnology*. Berlin: Springer- Verlag, 324.
- Smith, S.E. and Read, D.J. (2008). *Mycorrhizal symbiosis*, 3rd edn. Academic, London.
- Štajerová, K., Šmilauerová, M. and Šmilauer, P. (2009). Arbuscular mycorrhizal symbiosis of herbaceous invasive neophytes in the Czech Republic. *Preslia* 81: 341–355.

- Sylvia, D.M., Wilson, D.O., Graham, J.H., Maddox, J.J., Millner, P., Morton, J.B., Skipper, H.D., Wright, S.F. and Jarstfer, A.G. (1993). Evaluation of vesicular arbuscular mycorrhizal fungi in diverse plants and soils. *Soil biology and biochemistry* 25: 705-713.
- Troeh, Z.I. and Loynachan, T.E. (2003). Endomycorrhizal fungal survival in continuous corn, soybean, and fallow. *Agronomy Journal* 95: 224-230.
- van der Heijden, M.G.A., Klironomos, J.N., Ursic, M., Moutoglis, P., Streitwolf-Engel, R., Boller, T., Wiemken, A. and Sanders, L.R. (1998). Mycorrhizal fungal diversity determines plant biodiversity, ecosystem variability and productivity. *Nature* 396: 69-72.
- Wang, G.M. (1993) Effect of pH on arbuscular mycorrhiza. I. Field observation on the long term liming experiments at Rothamsted and Woburn. *New Phytologist* 124: 465-472.
- Wardle, D.A., Bardgett, R.D., Klironomos, J.N., Setälä, H., van der Putten, W.H., Wall, D.H. (2004). Ecological linkages between aboveground and belowground biota. *Science* 304: 1629-1633.
- Wu, Y., Liu, T. and He, X. (2009). Mycorrhizal and dark septate endophytic fungi under the canopies of desert plants in Mu Us Sandy Land of China. *Frontiers of Agriculture in China* 3(2): 164-170.
- Wubet, T., Kottke, I., Teketay, D. and Oberwinkler, F. (2003). Mycorrhizal status of indigenous trees in dry Afromontane forests of Ethiopia. *Forest Ecology and Management* 179: 387-399.
- Zhao, Z.W., Xia, Y.M., Qin, X.Z., Li, X.W., Cheng, L.Z., Sha, T. and Wang, G.H. (2001). Arbuscular mycorrhizal status of plants and the spore density of arbuscular mycorrhizal fungi in the tropical rain forest of Xishuangbanna, southwest China. *Mycorrhiza* 11: 159-162.

(Received 11 April 2011; accepted 1 October 2011)